

Fig. 4. Survival rates of male and female F344 rats given madder color for 104 weeks

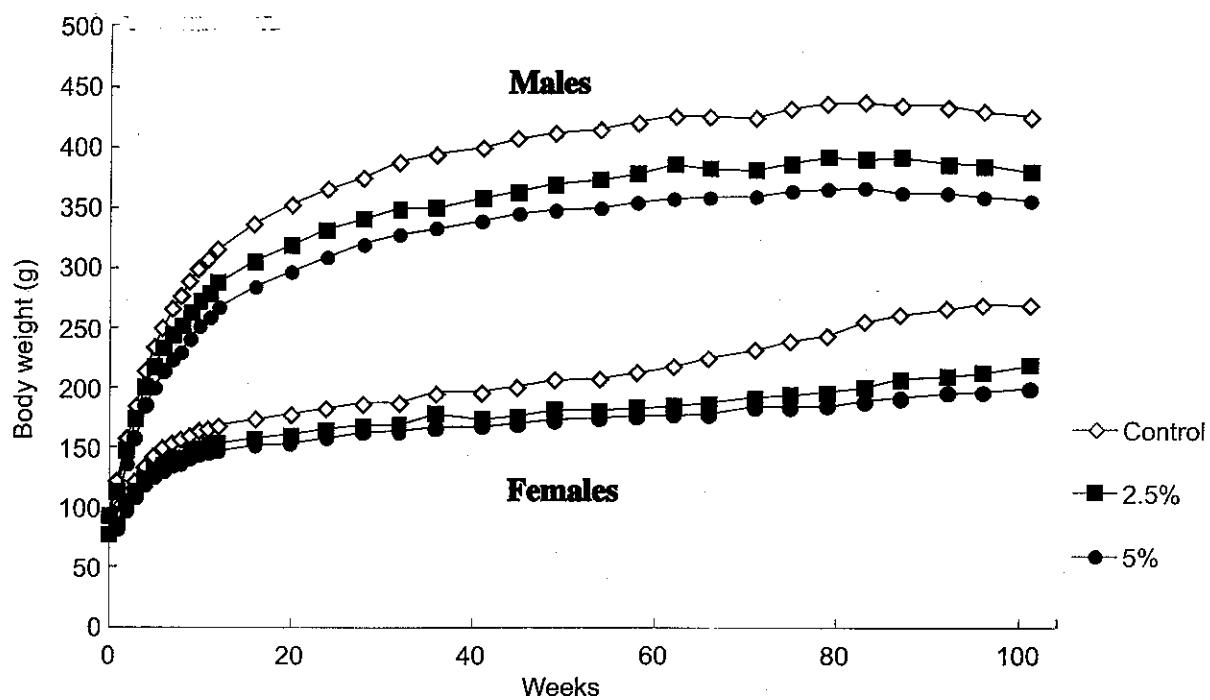


Fig. 5. Growth curves of male and female F344 rats given madder color for 104 weeks

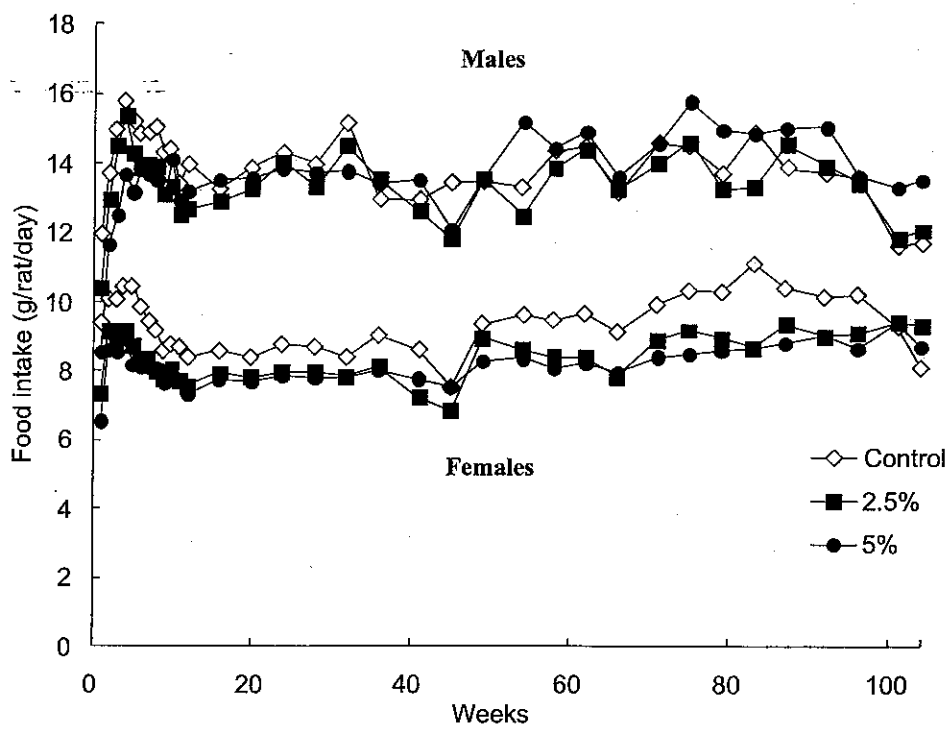


Fig. 6. Daily food intakes of males and females F344 rats given madder color for 104 weeks

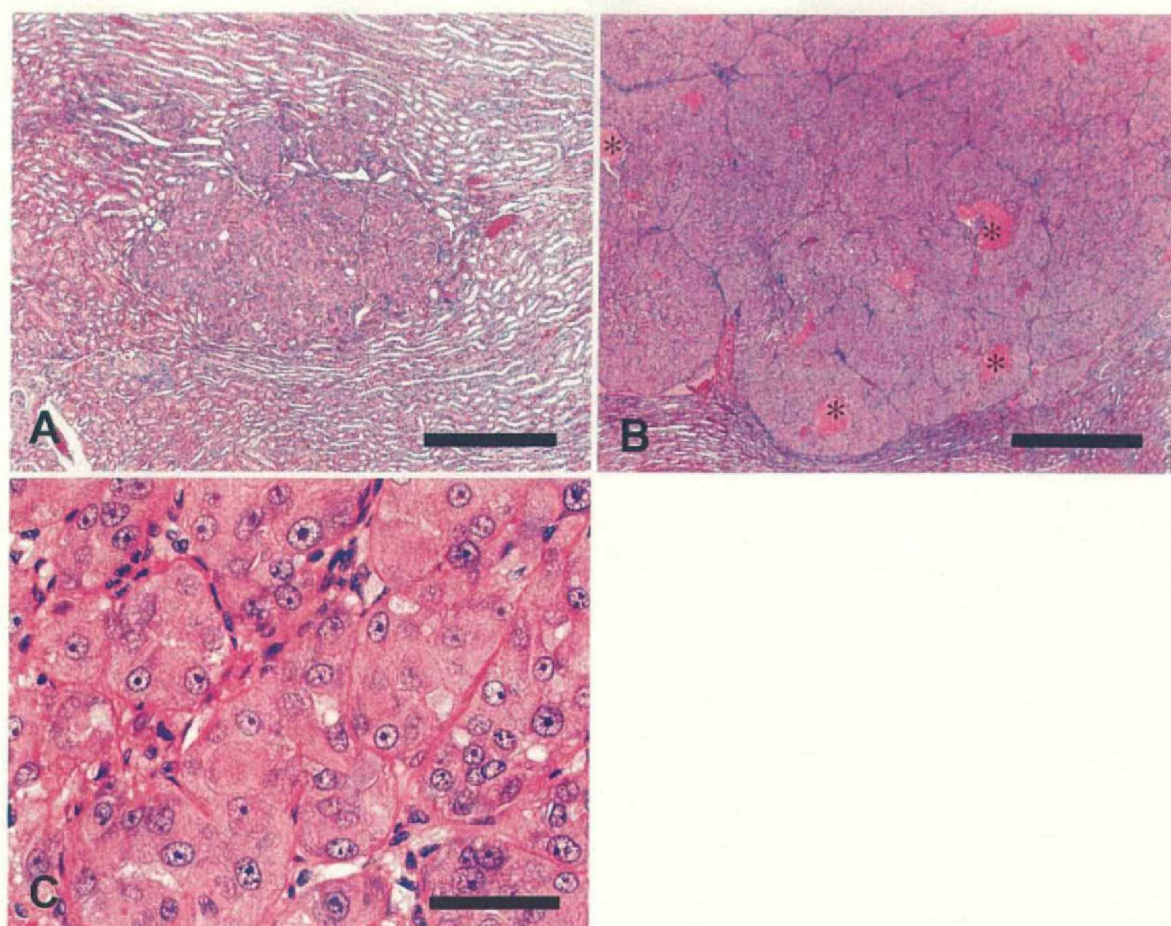


Fig. 7. Representative histopathological findings of lesions in the kidneys of F344 rats fed diet containing of madder color for 104 weeks.

(A) Tubular adenoma arisen from the outer medulla in a male rat treated with 5% of madder color. Bar = 500 μ m. (B) Tubular carcinoma containing necrotic foci (asterisks) located at cortico-medullary junction in a male rat treated with 5% of madder color. Bar = 1mm. (C) High power view of tubular carcinoma of panel (B). Note neoplastic cells with moderate to severe cellular atypia proliferate to form alveolar type cellular nests. Bar = 50 μ m.

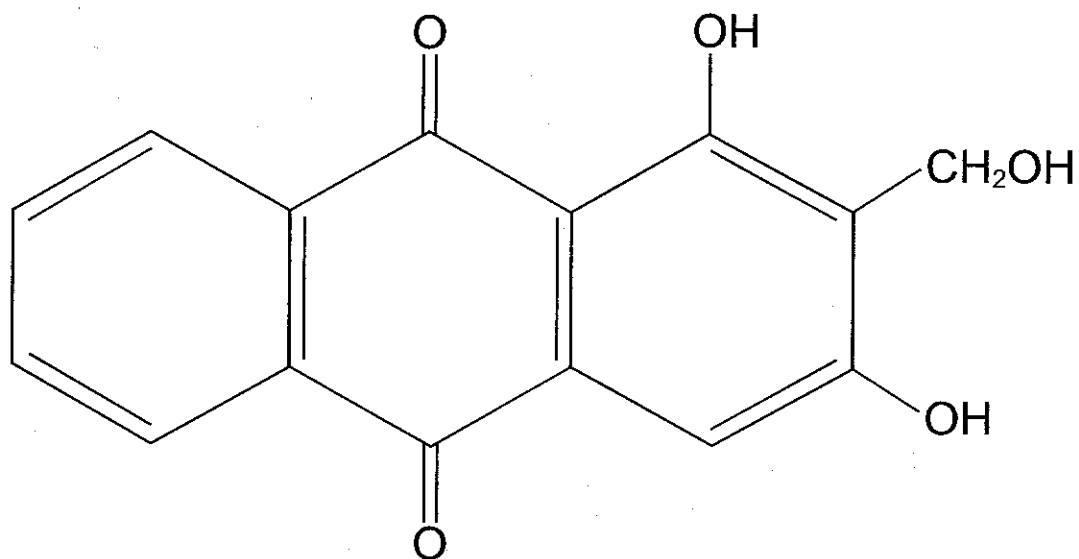


Fig. 8. Structure of Lucidin (1,3-dihydroxy-2-hydroxymethylantraquinone)